



**INSTALLATION OF OBERON TURN SIGNALS ON A DUCATI PAUL SMART:
YOU CAN MOUNT THE OBERON TURN SIGNALS IN THE "STOCK" LOCATION (BLACK OBERON) OR WHERE
THE FRONT FAIRING ATTACHES TO THE FRAME (SILVER OBERON).**

WHEN MOUNTING OBERON TURN SIGNALS TO THE FRONT FAIRING LOCATION YOU WILL NEED TO REMOVE THE CLIP # 13 AS SHOWN IN THE DRAWING.

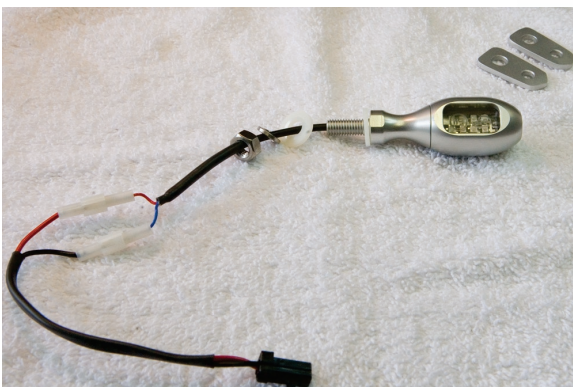
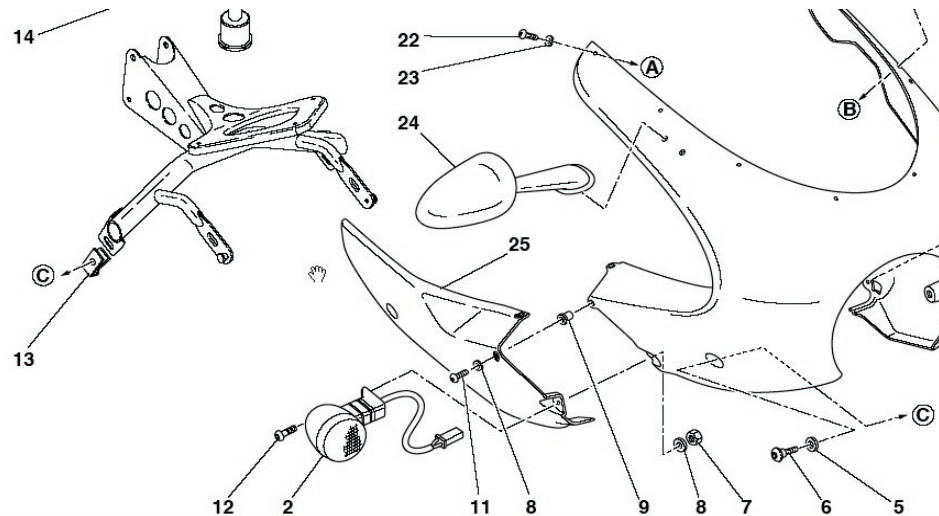
DISCONNECT PIGTAIL CONNECTORS FROM TURN SIGNAL AND THEN REMOVE NUT, LOCK WASHER AND ONE OF THE LARGE NYLON WASHERS. LEAVE THE OTHER LARGE NYLON WASHER IN PLACE.

FEED THE WIRES AND INLINE CONNECTORS THROUGH THE HOLE IN THE FRONT COWLING AND THEN THREAD THE WIRES AND INLINE CONNECTORS FIRST THROUGH THE LARGE NYLON WASHER YOU REMOVED, THEN THE LOCK WASHER AND THEN THE NUT. SNUG UP THE NUT WITH THE SUPPLIED STUBBY WRENCH AND MAKE SURE THE TURN SIGNAL IS ALIGNED CORRECTLY.

RECONNECT THE INLINE CONNECTORS TO THE PIGTAIL WITH THE OEM CONNECTOR. CONNECT THE OEM CONNECTOR TO THE MATING CONNECTOR ON THE WIRING HARNESS. NOTE THAT ON THE PAUL SMART THE WIRES MAY NEED REVERSING ON THE LEFT SIDE OF THE BIKE SINCE IT APPEARS DUCATI HAS MISWIRED THE HARNESS CONNECTOR. YOU WILL HAVE THIS SAME ISSUE IF MOUNTING IN THE "STOCK" LOCATION. REVERSING THESE WIRES IS JUST A MATTER OF DISCONNECTING THE INLINE CONNECTORS AND SWAPPING THEM.

WHEN DISCONNECTING INLINE CONNECTORS DO NOT PULL CONNECTORS APART BY THE WIRES!!!!

ONLY PULL ON THE CONNECTOR BODIES!!!!!!



THE IMAGES TO THE RIGHT AND LEFT GIVE YOU SOME IDEA OF HOW TO REMOVE AND INSTALL THE NUT, LOCKWASHER AND LARGE NYLON WASHER.

THERE ARE TWO SETS OF PLATES SUPPLIED. THE SET WITH 2 HOLES IS FOR MOUNTING THE TURN SIGNALS IN THE "STOCK" POSITION AND THE PLATES WITH ONE HOLE ARE USED TO "CONNECT" THE FRONT COWLING TO THE FAIRING WHEN THE TURN SIGNALS ARE MOUNTED ON THE FRONT COWLING.

